

Till Eulenspiegels lustige Strelche.

Horn I in F.

Richard Strauss, Op. 28.

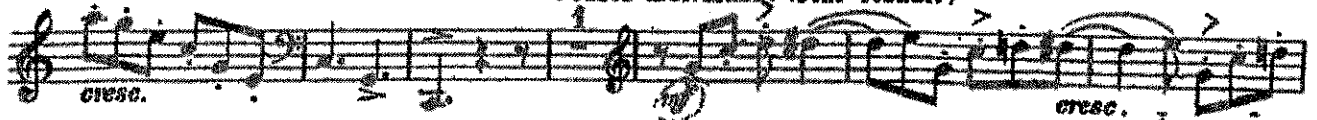
Gemächlich.

$\text{♩} = \text{Adas } \frac{4}{8}$

allmählich lebhafter



Volles Zeitmass. (sehr lebhaft)



29



22

M. RAVEL — PAVANE POUR UNE INFANTE DÉFUNTE

The image shows the first system of a musical score for the piece 'Pavane pour une infante défunte' by Maurice Ravel. The score is written on two staves. The upper staff begins with the tempo marking 'Lent' and the time signature '♩ = 54'. Below the staff, the text 'en Sol' is written. The music consists of a single melodic line with various note values and rests, connected by a long slur. The dynamic marking 'pp' (pianissimo) is placed below the staff. The lower staff also contains a single melodic line, similarly slurred. It begins with a dynamic marking 'p' (piano) and includes the instruction 'pp expressif' (pianissimo, expressive) below it. The system concludes with a double bar line and the word 'etc.' indicating the continuation of the piece.

IL BARBIERE DI SIVIGLIA
G. ROSSINI

SINFONIA

CORNO 1^o
(In Mi \flat)

AND^{te} SOST^{to}

Solo

p

In Sol

8

Solo

p

p

mf

SYMPHONIE N° 4.

I.

I. Horn.

Gustav Mahler.

In F
p
f
Nicht eilen.
Ein wenig drängend.
p-ff
cresc.
ff

18 Wieder wie zu Anfang: Gemächlich, behaglich.

18
pp
19
cresc.

Corno I

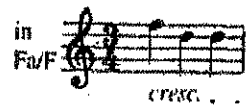
Symphonie Nr. 6

F-dur · F major
"Pastorale"
op. 68

Ludwig van Beethoven

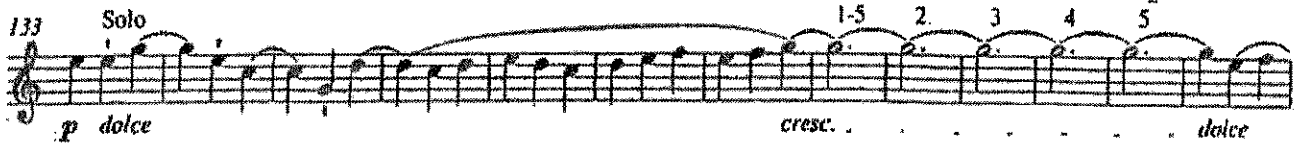
Allegro

in F \sharp /F



cresc.

133 Solo

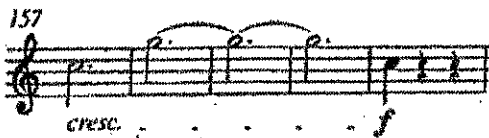


p dolce cresc. *dolce*

146



157



cresc. *f*



Allegretto

in F \sharp /F



Solo cresc. *f* *p*

Ein Heldenleben.

1. Horn.

in F.

Richard Strauss, Op. 40.

Lebhaft bewegt.

Musical score for the first horn part, measures 1 through 8. The score is written on six staves. It begins with a treble clef and a key signature of one flat (F major). The tempo is marked 'Lebhaft bewegt'. The music features a series of eighth and sixteenth notes, with some slurs and accents. Measure 4 contains a triplet of eighth notes. Measure 6 is marked 'dim. p'. Measure 7 is marked 'p cresc.' and 'heroisch'. Measure 8 is marked 'p' and 'cresc.'. The score ends with a double bar line and two parallel diagonal lines indicating the end of the section.

Musical score for the first horn part, measures 91 through 93. The score is written on three staves. Measure 91 is marked '91' and 'cresc.'. Measure 92 is marked '92' and 'ziemlich lebhaft.'. Measure 93 is marked 'molto cresc.' and 'cresc.'. The music continues with eighth and sixteenth notes, some slurs, and a final measure with a double bar line and a fermata.

Symphonie N^o 5.

Corno obbligato.

~~1. 2. tacci.~~

Gustav Mahler.

3. Scherzo.

Kräftig nicht zu schnell.
in F (obbligato) poco rit. a tempo

The first system of the Scherzo consists of three staves of music. The top staff begins with a dynamic marking of *p* (piano) and a fermata. It includes a first ending bracket labeled '1' and a measure number '6' at the end. The middle and bottom staves continue the melodic line with various dynamic markings including *ff* (fortissimo) and *fp* (fortissimo piano).

Hiessendek aber immer gemässigt

The second system of the Scherzo is a single staff of music. It begins with a dynamic marking of *p* (piano) and the instruction *molto espress.* (molto expressive). The staff contains a series of notes with slurs and accents.

The third system of the Scherzo consists of two staves of music. The top staff begins with a measure number '12' and a dynamic marking of *espress.* (expressive). The bottom staff continues the melodic line with dynamic markings of *espress.* and *ff*.

Symphonie Nr. 5

e-moll

Horn I in F

Peter Iljitsch Tschaikowsky op. 64

II

Andante cantabile, con alcuna licenza

5 Viol. II Solo
dolce con molto espress.

12 *animando* *riten.* **A** *sostenuto*
mf *p*

17 *animando* *sostenuto*
mf *p*

22 *Con moto* *animato*
p *dolce*

27 *sostenuto*
mp

Sinfonie Nr. 4 Es-Dur

„Romantische“

1. SATZ

Anton Bruckner

Horn 1 in F

Bewegt, nicht zu schnell

Solo
mf immer deutlich hervortretend

p dim.

cresc.

mf cresc.

cresc. sempre

molto cresc.

ff

2 1 10 1 1 20 1 30 1 40 1 50 1

3 3 3

A

SYMPHONIE N° 1.

1. Horn in F.

1. Satz.

Langsam. Schleppend.

Gustav Mahler.

Tempo 1. molto espr. *ppp* sehr weich gesungen

ppp weich und ausdrucksvoll

Tempo 1. *ppp* weich und ausdrucksvoll

Più mosso. accel.

Più mosso. 2 Tempo 1.

pp *ppp* Dämpfer ab *ppp*

f sempre ppp

2 Sehr zurückhaltend. 15 Sehr gemächlich.

MOZART

COSI' fan tutto.

COR. I

Nº 25. Rondo.

Adagio.

in E.

Viol. I.

Musical score for Violin I, measures 1-28. The score is in treble clef and 4/4 time. It begins with a first measure rest. The first staff contains measures 1-8, with dynamics *p* and *f*. The second staff contains measures 9-16, with dynamics *f* and *p*. The third staff contains measures 17-24, with dynamics *f* and *p*. The fourth staff contains measures 25-28, with dynamics *f* and *p*. Fingerings and slurs are indicated throughout.

35 Allegro moderato.

Musical score for Violin I, measures 35-78. The tempo changes to Allegro moderato. The score is in treble clef and 4/4 time. The first staff (measures 35-42) has dynamics *p*, *cresc.*, and *p*. The second staff (measures 43-50) has dynamics *fp fp fp fp fp fp*. The third staff (measures 51-58) has dynamics *p*, *cresc. f*, and *p*. The fourth staff (measures 59-66) has dynamics *p* and *fp*. The fifth staff (measures 67-74) has dynamics *p* and *fp*. The sixth staff (measures 75-78) has dynamics *fp*. Fingerings and slurs are indicated throughout.

Musical score for Cor. II, measures 78-122. The score is in treble clef and 4/4 time. It begins with a first measure rest. The first staff (measures 78-85) is marked *rallentando a tempo* and *colla parte*. The second staff (measures 86-93) has dynamics *p* and *cresc. f*. The third staff (measures 94-101) has dynamics *p* and *cresc. f*. The fourth staff (measures 102-109) has dynamics *p* and *cresc. f*. The fifth staff (measures 110-117) has dynamics *p* and *cresc. f*. The sixth staff (measures 118-122) has dynamics *p* and *cresc. f*. Fingerings and slurs are indicated throughout.

Musical score for Violin I, measures 122-127. The score is in treble clef and 4/4 time. The first staff (measures 122-127) has dynamics *p* and *cresc. f*. A circled measure number 127 is present at the end of the staff. Fingerings and slurs are indicated throughout.

Beethoven, symphonie n°3

cor 1

1er mvt Es 



Scherzo

Trio

Soli 167

